

209 SERIES

HIGH PERFORMANCE DOORS

The 209 Series provides a sleek look, rapid door speed and long-term performance, plus low maintenance costs for many applications, including auto dealerships, municipal buildings, hospitals and high security applications such as jails.

MARATHON
AN ASI DOORS BRAND

EASY INSTALLATION!



APEX 209-V

The APEX 209-V is an all-vision, high speed, rigid door.

- Exceptional aesthetics
- Full-width, all-vision slats
- Weather-tight gaskets
- Quiet operation



DURA 209-D

The DURA 209-D is a complementary door to the APEX 209-V. Get the same aesthetics and performance with no, or reduced number of, vision slats.



INNOVATIVE DESIGN

Its low-profile footprint and clearance, paired with our non-contacting slat design provides a quiet operation.

EXCEPTIONALLY FAST

The 209-V and 209-D cycle up to 80" per second.

HIGH CYCLABILITY WITH LOW LIFETIME COST

Few moving parts means less "fix and repair" situations. It also means less downtime, improving operational safety.

DESIGN AND CONSTRUCTION

DOOR SIZES

- Up to 20'w x 16'h

PANEL CONSTRUCTION

- Rigid anodized aluminum
- Patent Pending No Metal-to-Metal slat operation

OPERATION

- Self-diagnostic, programmable logic controls with variable speeds
- 2-speed operation. Open up to 80"/sec. Adjustable closing speed.
- High output electric direct drive 3 h.p. totally enclosed motor available
- NEMA 4 polycarbonate control box with digital display

PERFORMANCE FEATURES

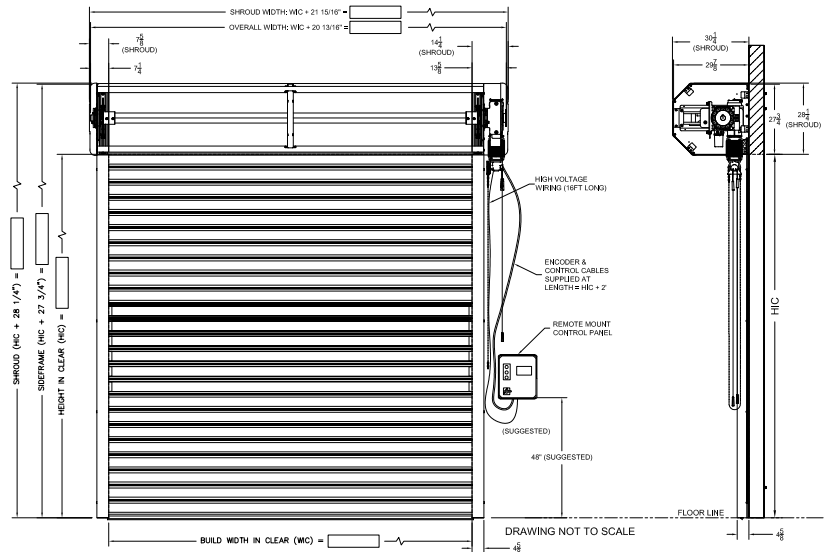
- Wireless UL 325 approved reversing edge for instant stop/reverse
- Send and receive reversing photo-eye

WARRANTY

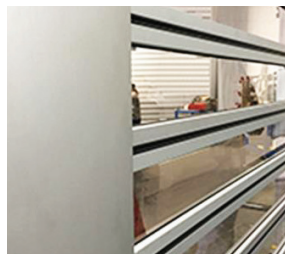
- One year limited warranty on all components

OPTIONS

- Light curtain
- Activation devices:
 - Pull cord
 - Single-push button
 - Additional photo-eyes
 - Radio control
 - Loop detector
 - Pre-announce to close kit (light or alarm or light/alarm combo)
 - Motion detector
 - LED light bar
- Adjustable time delay close with auto close feature
- Window slats in 4 slat increments (custom configurations available)
- Operator and barrel shrouds
- Custom colors



Standard dimensions shown. For tighter clearances, consult factory.



Rugged Weatherseal



Control Panel/Digital



Full Width "All-Vision" Slats



No Metal-to-Metal Contact